

Part Number: 46633

Kit Contents

Item #	Quantity Req.	Description
1	1	Right Side Step
2	1	Left Side Step
3	6	Main brackets
4	2	Front support brackets
5	2	Rear support brackets

Hardware Bag Contents

Item #	Quantity Req.	Description
1	10	Bolt plates (1965)
2	10	Rubber Stabilizer pads (1964)
3	10	3/8" -16 Flange nuts (789)
4	10	3/8" flat washer (772)
5	20	8mm x 25mm Flange bolts
6	8	8mm Hex head flange nuts

Additional Items Required For Installation

Item #	Quantity Req.	Description
1	None	

Conflicts

Genuine Running Boards:

Recommended Tools

Personal & Vehicle Protection	NOTES
Eye Protection	
Special Tools	NOTES
None	
Installation Tools	NOTES
Socket/Ratchet	13mm and 9/16"
Torque Wrench	13 lbs-f
Tape Measure	
Special Chemicals	NOTES

General Applicability

--

Recommended Sequence of Application







Item #	Accessory	
1		

*Mandatory

Vehicle Service Parts (may require some reassembly)

Item #	Quantity Required	Description
1		

Legend

	STOP: Damage to the vehicle may occur. Do not proceed until process has been complied with.
	OPERATOR SAFETY: Use caution to avoid risk of injury.
	CRITICAL PROCESS: Proceed with caution to ensure a quality installation. These points will be audited on a completed vehicle installation.
	GENERAL PROCESS: This highlights specific processes to ensure a quality installation. These points will be audited during the accessory installation.
	TOOLS & EQUIPMENT: Calls out the specific tools and equipment recommended for this process.
	REVISION MARK: This mark highlights a change in installation with respect to previous issue.

Procedure

Care must be taken while installing this accessory to ensure damage does not occur to the vehicle. The installation of this accessory should follow approved guidelines to insure a quality installation.



FIG 1-1

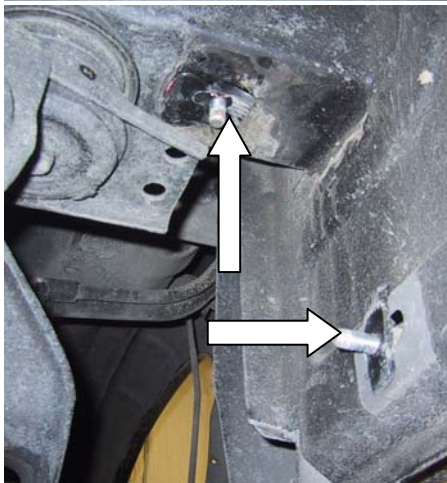


FIG 1-2



FIG 1-3

1. Install Driver Side Step

- (a) Place ten (10) stabilizer pads (1964) over the threaded bolt on ten (10) bolt plates (1965). (figure 1-1)
- (b) Locate the three (3) mounting holes on the interior rocker panel, and two mounting holes on the front and rear cab cross support. Place three (3) bolt plates (1965) into rocker panel, and two into the front and rear cab cross supports. (figure 1-2)
- (c) Mount all three main brackets to the interior rocker panel using one 3/8" flange nut (789) and flat washer(772) in each location. Hand tighten only leaving brackets loose for adjustment. (fig 1-3) **Locations for brackets are approximately 9.5", 46.00", and 71.45" from front of the step tube.** (fig 1-4)
- (d) Install the front support bracket to the bolt plate (1965) in the front cab cross support with one 3/8" flange nut (789) and flat washer (772). Leave loose for bracket adjustment. (fig 1-5)
- (e) Attach the front support bracket to the front main bracket using two (2) 8mm x 25mm Flange bolts and two (2) 8mm hex head flange nuts. (fig 1-6)

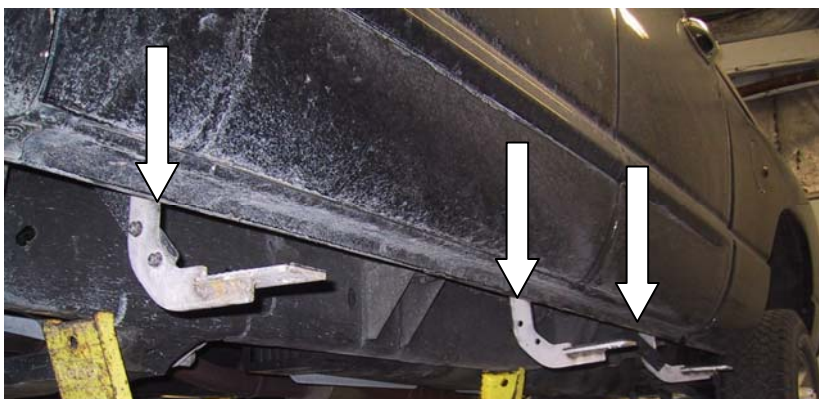


FIG 1-4

Procedure



FIG 1-5

- ⚠ (f) Repeat **Step (d)-(e)** for the rear support bracket.
- (g) Attach the step tube to the main brackets using six (6) 8mm x 25mm flange head bolts. (fig 1-7)
- ⚠ (h) Torque six (6) 8mm x 25mm flange head bolts to the tube to 13 ft/lbs. (fig 1-7)
- (i) Tighten all remaining nuts and bolts securely to the brackets and under body of the vehicle.

2. Installation of Passenger Side Tube

- (a) Repeat steps 1(a) through 1(i) for the passenger side of the vehicle.

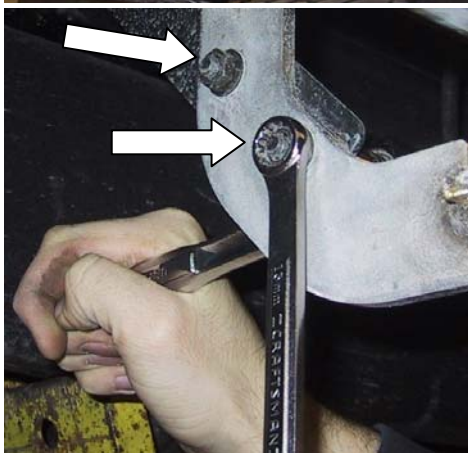


FIG 1-6

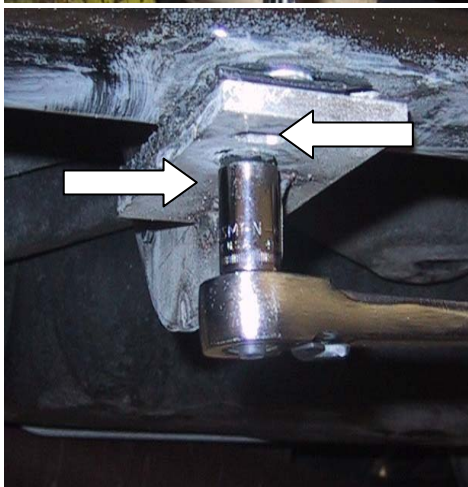


FIG 1-7