



**1992-UP CHEVY / GMC 2500-3500 SERIES INSTALLATION SHEET  
PART #61513 (DUALY)**

Congratulations on your purchase of a high quality PUTCO product. Should you need any application or technical assistance feel free to call us at:

**1-800-247-3974**

**Monday-Friday 8:00 a.m.- 5:00 p.m. (Central Standard Time)  
Contact your PUTCO dealer for other quality accessories.  
PUTCO Inc. - 216 West First Street - Story City, Iowa 50248**

**PLEASE READ ALL INSTRUCTIONS BEFORE BEGINNING INSTALLATION AND BE SURE TO CHECK TO SEE THAT ALL PARTS AND HARDWARE ARE INCLUDED.**

Parts List	
Description	Qty
Boss boards	2
Flaps (#6494 & 6495)	2
1/4" x 1-1/4" SS Slot head screw (#726)	16
1/4" x 3/4" Hex head bolts (#730)	20
1/4" Hex nut (#790)	36
1/4" Lock washer (#780)	36
1/4" x 1" Self drill & tap screws (#701)	10
Hex head screw (#716)	4
Flange nut (#791)	4
18" Mini-Trim (#7820)	2
Endcaps(#7814)	2
Flat brace (#534)	2
6" Bent brace (#511)	2
14-3/4" Angle braces(#553)	2
36" Vinyl foam tape (#695)	2
Painted bracket (#592 & #594)	2

Tools Needed for Installation
Electric Drill
1/4" Drill Bit
3/8" Wrench
3/8" Magnetic Drive Socket
7/16" Wrench and Socket
Screwdriver
Level
Vise Grips

**NOTE:** Remove the protective plastic coating from the running boards and mud flaps. The steps and figures shown are for the passenger side installation.

**Step 1:** Form the stainless steel mud flaps to conform to the wheel well opening. **(SEE FIGURE 1)** Bolt the stainless steel mud flap to the rear of the running box board and an end cap to the front using 1/4" x 1-1/4" SS slot head screws, lock washers, and nuts. Next, apply mini-trim **(#7820)** only along the edge of the mud flap (optional). **(SEE FIGURE 3)**

**Step 2:** Apply foam tape **(#695)** along back lip of box board. **(SEE FIGURE 2)**

**Step 3:** Using three C-clamps or vise grips, clamp the box board to the rocker panel and the mud flap to the wheel well flange. Make sure the box board is level.

**Step 4:** Drill three 1/4" holes through the rocker panel lip. Install 1/4" x 1-1/4" SS slot head screws, lock washers, and nuts. **(SEE FIGURE 2 & 3)**

**Step 5:** Bolt the passenger side weld bracket **(#592)** to the brace on the box board, located at 5.38" from the front of the box board, using hex head bolts, lock washers, and nuts. Use 1/4" self tapping bolts to attach the other end of the underbody cross brace. Adjust up or down to align with cab board. **(SEE FIGURE 2)**

**Step 6:** Bolt a 14-3/4" long angle brace **(#553)** angle brace to the brace located on the box board at 23-1/2" from the front of the box board, using hex head bolts, lock washers, and nuts. Now bolt 3" x 16-1/4" **(#534)** to 14-3/4" angle brace **(#553)**. **(SEE FIGURE 4)** Attach the other end of the flat brace **(#534)** to the vehicles underbody cross braces, then install the 1/4" self tapping screw. Make sure the box board and cab board line up, also that the box board is level outward from the vehicle.

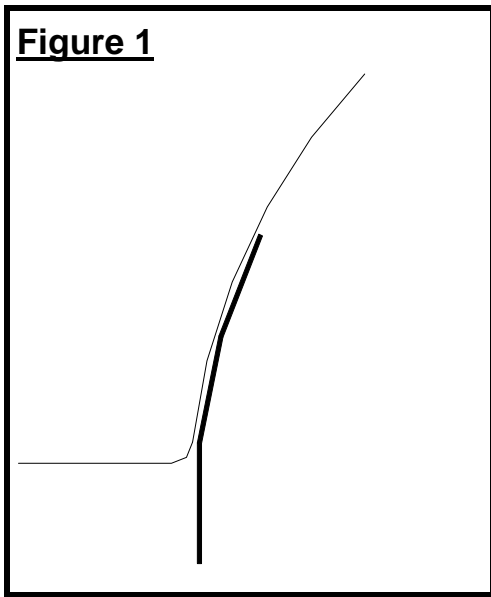
**Note:** PUTCO recommends applying a high quality automotive wax to maintain the original appearance on your new running boards.

INSTRUCTION SHEET FOR IN61513 – January 1999

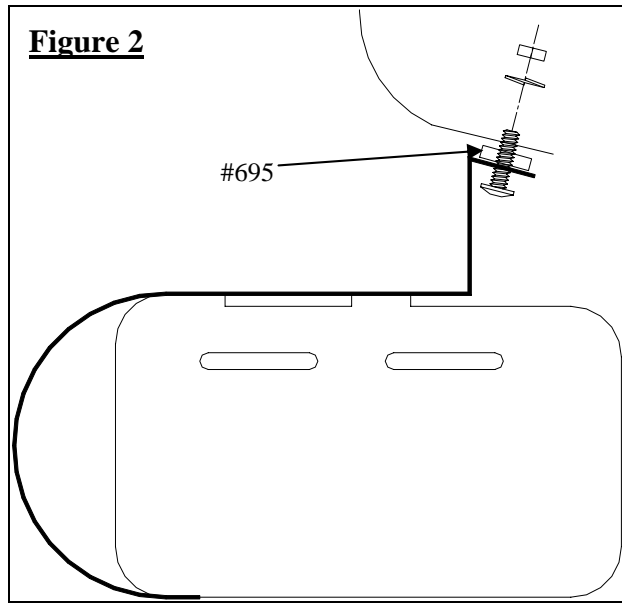


**1992-UP CHEVY / GMC 2500-3500 SERIES INSTALLATION SHEET**

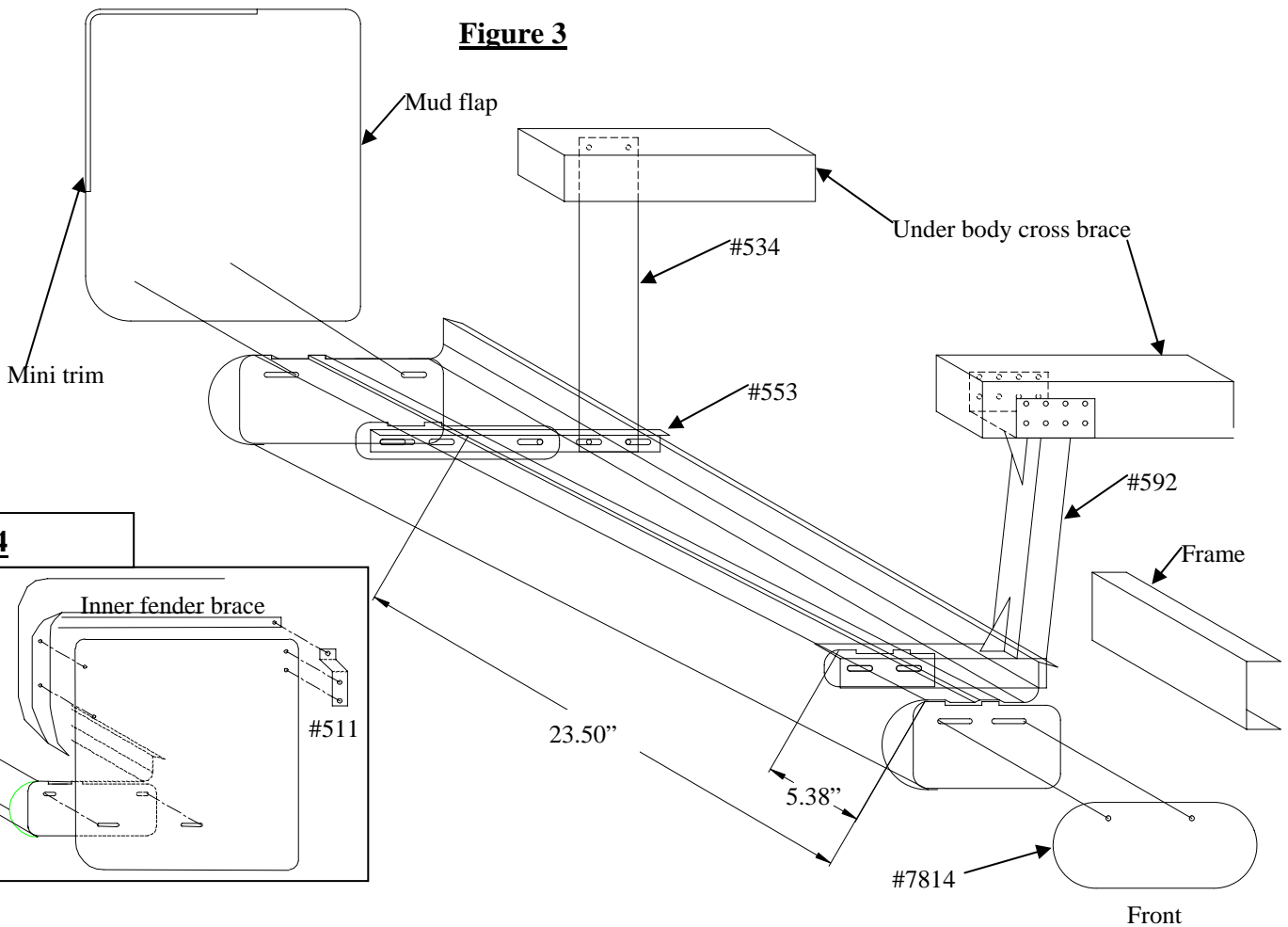
**Figure 1**



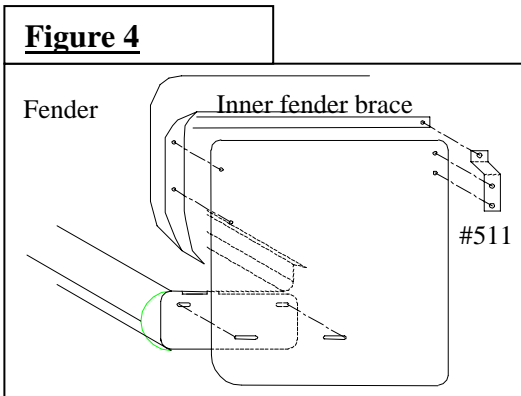
**Figure 2**



**Figure 3**



**Figure 4**



**LIMITED WARRANTY**

Putco guarantees its Stainless Steel and Aluminum products against defects in workmanship and material for as long as you own your vehicle. Black products have a 90 day warranty on the painted surface. Any defects resulting from faulty material or workmanship will be warranted by Putco and repaired or replaced at our discretion. Putco assumes no extra labor costs. Damages caused by freight carriers, improper installation, misuse, collision, or neglect will not be warranted by Putco.