



# INSTALLATION INSTRUCTIONS FOR HOG AND BOSS HOG BAR FOR 01-02 CHEVY HEAVY DUTY

Congratulations on your purchase of a high quality PUTCO product.

Should you need any application or technical assistance feel free to call us at: **1-800-247-3974**

Monday-Friday 8:00 a.m. - 5:00 p.m. (Central Standard Time)

Contact your PUTCO dealer for other quality accessories.

PUTCO Inc. - 216 West First Street - Story City, Iowa 50248



Please read all instructions before beginning installation and be sure to check to see that all parts and hardware are included .

## Parts List

Description	Qty
Hog or Boss Hog Bar	1
Driver's side Bracket	1
Passenger's side Bracket	1
1/2 X 4 3/4" Bolt	2
1/2 X 2" Bolt	2
Bolt Plate	2
1/2" Washer	10
1/2" Nut	4
1/2" Lock Washer	6
3/8" Nut	2

## Tools Needed for Installation

- 3/4" Wrench
- 9/16" Socket
- 18mm Socket
- Ratchet
- Allen Wrench

**Step 1:** Locate the Tow Hooks and the three bolts that hold each hook into place. Remove the tow hooks using a 18mm socket. There are three bolts one on each side of the hook and one on the bottom that need to be removed.

**Step 2:** Once the Tow Hooks and bolts are removed insert one of the bolt plates into the bottom hole so that the bolt is facing down.

## INSTALLATION INSTRUCTIONS FOR HOG AND BOSS HOG BAR FOR 01-02 CHEVY HEAVY DUTY

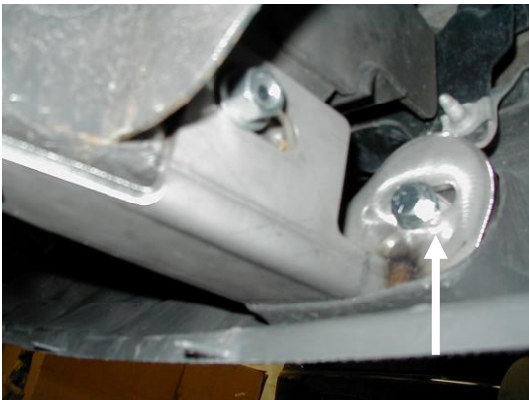


**Step 3:** Hold the Bracket up to the bolt plate so that the holes in the bracket line up with the bolt plate and hole remaining from Step 1. The picture to the right shows the driver side.

**Step 4:** Insert a 1/2" by 4 3/4" bolt with 1/2" washer, with lock washer and nut, finger tighten .

**Step 5:** Thread the 3/8" nut onto the bolt plate and finger tighten.

**Step 6:** Repeat Steps 1-5 for the other bracket.



**Step 7:** Place a bolt and washer through the opening in the round end of the bracket and start threading the bolt into the welded insert in the Hog Bar , as shown in the picture to the left .

**Step 8:** Repeat Step 7 for other side .

**Step 9:** Center the Hog Bar with the vehicle .

**Step 10:** Tighten all the bolts and nuts holding the brackets in place.

**NOTE:** There are holes in the skid plate to mount the license plate to.

---

**Note:** PUTCO recommends applying a high quality automotive wax to maintain the original appearance on your new Hog Bar.

---

INSTRUCTION # IN78202-May 2003

### LIMITED WARRANTY

Putco guarantees it's Stainless Steel and Aluminum products against defects in workmanship and material for as long as you own your vehicle. Black products have a 90 day warranty on the painted surface. Any defects resulting from faulty material or workmanship will be warranted by Putco and repaired or replaced at our discretion. Putco assumes no extra labor costs. Damages caused by freight carriers, improper installation, misuse, collision, or neglect will not be warranted by Putco .