

# PUTCO 2004 FORD F-150

## INSTALLATION INSTRUCTIONS FOR HOG BAR

Congratulations on your purchase of a high quality PUTCO product. Should you need any application or technical assistance feel free to call us at:  
**1-800-247-3974**

**Monday-Friday 8:00 a.m. - 5:00 p.m. (Central Standard Time)**  
**Contact your PUTCO dealer for other quality accessories.**  
**PUTCO Inc. - 216 West First Street - Story City, Iowa 50248**

**Please read all instructions before installation and to check to see that all parts are included.**

### Section I – Installation Preparation

#### Kit Contents

| Item # | Quantity Reqd. | Description |
|--------|----------------|-------------|
| 1      | 1              | Hog Bar     |
| 2      | 2              | Brackets    |
|        |                |             |
|        |                |             |

#### Bolt Kit Contents







| Item # | Quantity Reqd. | Description         |
|--------|----------------|---------------------|
| 1      | 4              | 8mm bolts 1 ½” long |
| 2      | 4              | Washers             |
| 3      | 4              | Lock washers        |
|        |                |                     |
|        |                |                     |

#### Recommended Tools

|                            |  |
|----------------------------|--|
| <b>Safety Tools</b>        |  |
| Eye Protection             |  |
|                            |  |
| <b>Special Tools</b>       |  |
|                            |  |
|                            |  |
| <b>Installation Tools</b>  |  |
| 5/8” Socket                |  |
| ¾” Socket                  |  |
| Ratchet                    |  |
| 8mm Socket                 |  |
| Wiping Cloth (non-scratch) |  |
|                            |  |



#### Legend

|   |  |
|---|--|
|  | <b>STOP:</b> Damage to the vehicle may occur. Do not proceed until process has been complied with.   |
|  | <b>OPERATOR SAFETY:</b> Use caution to avoid risk of injury.   |
|  | <b>CRITICAL PROCESS:</b> Proceed with caution to ensure a quality installation. These points will be audited on a completed vehicle installation.            |
|  | <b>GENERAL PROCESS:</b> This highlights specific processes to ensure a quality installation. These points will be audited during the accessory installation. |
|  | <b>TOOLS &amp; EQUIPMENT:</b> Calls out the specific tools and equipment recommended for this process.   |
|  | <b>REVISION MARK:</b> This mark highlights a change in installation with respect to previous issue.  |

#### LIMITED WARRANTY

Putco guarantees it's Stainless Steel and Aluminum products against defects in workmanship and material for as long as you own your vehicle. All painted products have a 90 day warranty on the painted surface. Any defects resulting from faulty material or workmanship will be warranted by Putco and repaired or replaced at our discretion. Putco assumes no extra labor costs. Damages caused by freight carriers, improper installation, misuse, collision, or neglect will not be warranted by Putco.

# PUTCO 2004 FORD F-150 INSTALLATION INSTRUCTIONS FOR HOG BAR

## A. Pre-installation Preparation

- ➔ 1. Verify kit contents.
- ➔ 2. Remove protective wrapping from hog bar and place on a non-abrasive surface.
- 🛑 3. Remove the brackets and hardware from the box.

## B. Remove Tow Hooks

- ➔ 1. Locate the Bolts that hold the tow hooks in place we will be using these bolts for the brackets. (Fig. B1)



**IMPORTANT:** When loosening the bolts from the tow hooks use caution so the plate on the inside of the frame does not slide around.

- ➔ 2. Remove the bolts that hold the tow hooks in place by using A 5/8" socket these bolts are threaded into a plate on the inside of the frame.

## C. Install Brackets

- ➔ 1. Begin to mount the brackets in place where you removed the tow hooks shown in (fig. C1) using the bolts you removed in step two.



**IMPORTANT:** Make sure you leave these bolts loose.

## D. Install Hog Bar

- ➔ 1. You will need to remove your license plate so you can attach it to the front of your hog bar.
- ➔ 2. Place the hog bar up to the brackets and thread the 8mm bolts with washer & lock washer into the hog bar.
- ➔ 3. Tighten the bolts that mount from the bracket to the hog bar for both sides.
- ➔ 4. Center the Hog Bar on the truck. (Fig. D1)
- ➔ 5. Tighten the bolts that hold the bracket to the frame of the truck for both sides.
- 🛑 6. Make sure all bolts are tight & license plate is secured to the front of the hog bar.



Figure B1

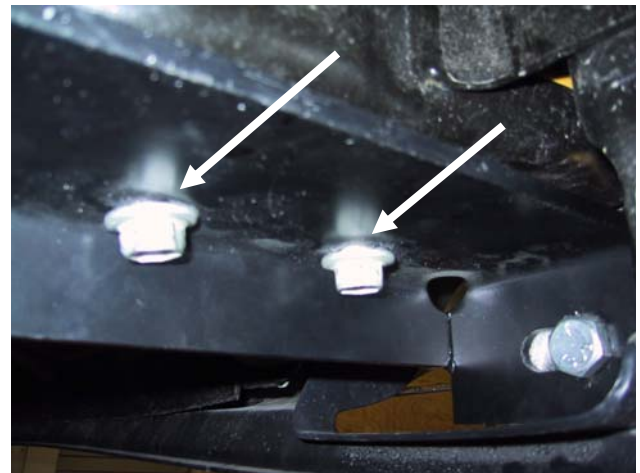


Figure C1 Driver Side



Figure D1

### LIMITED WARRANTY

Putco guarantees its Stainless Steel and Aluminum products against defects in workmanship and material for as long as you own your vehicle. All painted products have a 90 day warranty on the painted surface. Any defects resulting from faulty material or workmanship will be warranted by Putco and repaired or replaced at our discretion. Putco assumes no extra labor costs. Damages caused by freight carriers, improper installation, misuse, collision, or neglect will not be warranted by Putco.