

INSTALLATION INSTRUCTIONS

LIQUID REPLACEMENT TAILGATE HANDLE

PART #90115 (1988-1998 CHEVY/GMC)

PUTCO

Please note: You *must* follow these instructions to install the parts correctly otherwise damage may occur.
Read all instructions before installation and check to see if all parts listed are included.

KIT CONTENTS

Item#	Qty	Description
1	1	Handle assembly
2	1	Handle surround

BOLT KIT CONTENTS

None Required

RECOMMENDED TOOLS

Safety Tools

1. Eye Protection

Special Tools

1. Torque head driver (star driver)

Installation Tools

1. Flat head screwdriver

Special Chemicals & Solutions

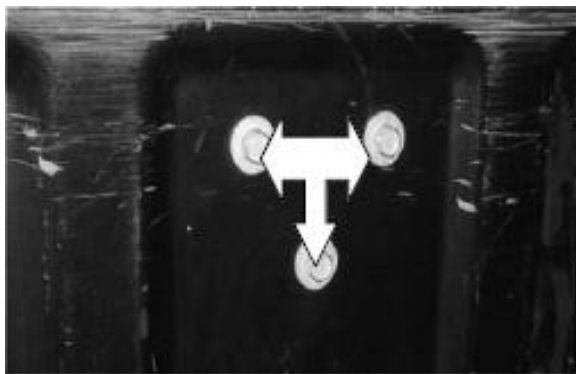
FACTORY TAILGATE HANDLE REMOVAL INSTRUCTIONS

1

Pre-installation preparation.

Verify the kit contents (check against parts listing).
 Remove the protective wrapping from the replacement tailgate handle and surround. *Hold each part up to your vehicle to visually check fitment.*

2



Remove factory tailgate handle bolts.

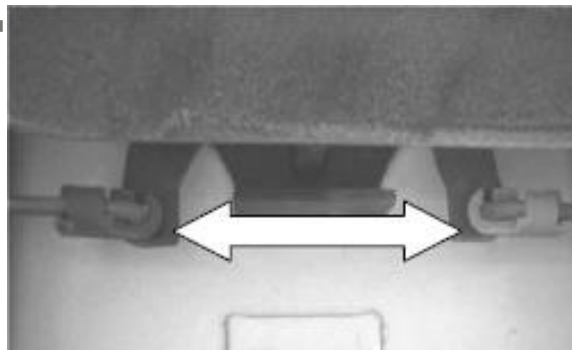
Locate the three (3) bolts on the inside of the tailgate.
 Remove the three bolts from the tailgate using the torque head driver. This will release the main portion of the handle.

3

Remove factory tailgate handle surround.

Carefully remove the surround from the outside of the tailgate using a flat head screwdriver.

4



Complete factory handle removal.

After removing the factory surround you will be able to disconnect the connecting rods from the center pull assembly. Completely remove the factory tailgate handle assembly from the vehicle.

LIMITED WARRANTY

Putco guarantees its Stainless Steel and Aluminum products against defects in workmanship and material for as long as you own your vehicle. All painted products have a 90 day warranty on the painted surface. Any defects resulting from faulty material or workmanship will be warranted by Putco and repaired or replaced at our discretion. Putco assumes no extra labor costs. Damages caused by freight carriers, improper installation, misuse, collision, or neglect will not be warranted by Putco. Putco is not liable for any vehicle damage resulting from the installation of our Liquid Replacement Handles.

INSTALLATION INSTRUCTIONS
LIQUID REPLACEMENT TAILGATE HANDLE
PART #90115 (1988-1998 CHEVY/GMC)



LIQUID REPLACEMENT TAILGATE HANDLE INSTALLATION INSTRUCTIONS

5

Begin basic installation of replacement handle.

Insert the Putco Liquid tailgate handle into the opening and loosely thread one of the top mounting bolts to secure the handle in position. Connect the connection rods to the plastic tabs on the handle assembly.

6

Insert replacement tailgate surround.

Remove the backing from the tape on the replacement surround. Gently pull the new tailgate handle forward. Slide the surround over the handle and insert the top of the surround into the tailgate opening. Starting at the top, slowly press the surround into place on the tailgate.

7

Complete tailgate handle installation.

With the surround and handle assembly in place reinsert and tighten all three main mounting bolts on the inside of the tailgate using the torque head driver. *Check to ensure proper function of the tailgate handle by opening and closing the tailgate several times.*